

AeroSpreader™ S250 Feed Broadcaster

The AeroSpreader™ S250 is a mid-range sized mobile dry pellet feed broadcaster designed to handle 2.0 to 9.0 mm extruded feed pellets using a 6.5 hp Honda® motor direct driving an Aerite™ AB135 model blower. The 250 kilo/550 lb capacity marine aluminum hopper is specifically sized to match feed hopper capacity with feed broadcast rates for larger site operations. This optimum hopper to blower matching minimizes repetitive stop and reload scenarios that would occur if either the smaller AeroSpreader™ S80 or S125 models is selected.

AeroSpreader™ S250 model feed broadcasters are matched with a reliable 6.5 hp Honda® motor (optional electric motor available) that direct drives an Aerite™ AB135 model blower providing the energy necessary to broadcast feed pellets from 2.0 mm to 9.0 mm through a 4-inch diameter stainless steel flex hose. The handheld broadcast hose offers full operator feed control of feed pellet placement as needed to minimize fish feed competition and ensure maximum growth.

This model of dry pellet feed broadcaster is manufactured in a range of platform configurations to address site feed loading methods, truck, trailer or boat design characteristics, or for more traditional mobile walkway and stationary dock positioning. The AeroSpreader™ S250 is available with optional remote cable controls for blower speed, feed gate control as well as a range of feed broadcast hose configurations from the self-supporting 360-degree manually aimed Periscope Feed Head™ to 6m (20 ft) feed broadcast booms and feed disbursement tips.

Lined Feed Broadcast Hose

Stainless steel feed broadcast hose with smooth inner liner maximizes hose operating life and feed pellet broadcast distances.

Direct Drive Blower

A direct drive Aerite™ AB135 model blower requires no belt or pulley adjustments.

High Blower Performance

Matched air inlet and impeller design reduce fuel operating costs while delivering high scfm air delivery rates at lowest possible sound levels.

10.2 cm (4 in) Blower Outlet

Large air volume air plenum for high volume feed delivery rates and broadcast coverage.



AeroSpreader™ S250 trailer model with Manual Periscope Feed Head™ and Feed Extension Tube

Field Serviceable

Easy operator maintenance and repair and best reliability.

Low Maintenance

Tough marine grade aluminum hopper will not rust.

Almag® Impeller

One-piece cast aluminum impeller lowers operating and service costs.

Quick Deployment

Self-contained power pack fitted to a compact sized, lightweight feeder ensures quick set up and operation practically anywhere.

No Feed Pellet Breakage

Internal feeder surfaces and edges designed to ensure no feed pellet remains trapped and no pellet is damaged or broken during the feed pellet broadcasting process.

AeroSpreader™ S250 Specifications

Capacity	250 kg / 551 lb
Feed Sizes	2 – 11 mm
Broadcast Rate	37.5 kg / 82.6 lb maximum per minute for 9 mm feed pellets. Note that feed delivery rates increase as feed pellet sizes decrease.
Broadcast Range	21.5 m / 70.5 ft with 9 mm pellets
Dimensions (L x W x H)	Stationary model: 101 x 84 x 123 cm / 40 x 33 x 48 in Mobile model: 165 x 84 x 132 cm / 65 x 33 x 52 in
Tare Weight (empty)	Stationary model: 68 kg / 150 lb Mobile model: 81 kg / 178 lb



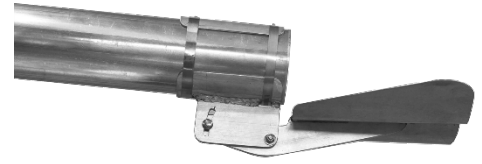
AeroSpreader™ S250 with Power Periscope Feed Head™ and Feed Extension Tube



AeroSpreader™ S250 with Feed Extension Boom

Feed hopper size can be customized. Specifications and design subject to change without notice. Designed and manufactured in Canada.

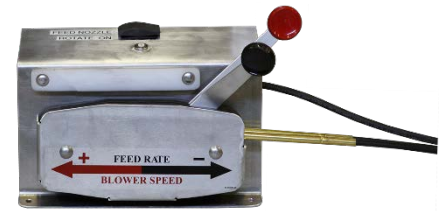
Feeder Options



Gull Wing air deflector for optimum feed spread



Manual Periscope Feed Head™ with Feed Extension Tube to maximize feed broadcast distance and control



Extended Cable Controls for truck/ATV/boat mounted feeder

See Options Sheet for a full listing of accessories and feeder options.