

AeroSpreader™ S125 Feed Broadcaster

A compact stationary or mobile feed pellet blower offering feed rates and distances commonly found in our larger mid-range AeroSpreader™ feed broadcasters. The marine grade aluminum broadcaster is designed with a low hopper height ideally suited for the loading of bagged feeds with a low center of gravity, this feed broadcaster is designed for moving around on narrow walkways, or mounting on vehicles or trailers.

Lined Feed Broadcast Hose

Stainless steel feed broadcast hose with smooth inner liner maximizes hose operating life and feed pellet broadcast distances.

Compact Dimensions

Ideal for narrow walkways and easy boat or vehicle positioning.

Direct Drive Blower

A direct drive Aerite™ AB135 model blower requires no belt or pulley.

High Blower Performance

Matched air inlet and impeller design reduce fuel operating costs while delivering high scfm air delivery rates at lowest possible sound levels.

Feed Eductor

IAS proprietary designed eductor eliminates feed damage.

Low Maintenance

Tough marine grade aluminum hopper will not rust.

Quick Deployment

Self-contained power pack fitted to a compact sized, lightweight feeder ensures quick set-up and operation.

No Feed Pellet Breakage

Internal feeder surfaces and edges designed to ensure no feed pellet remains trapped and not pellet is damaged or broken during feed pellet broadcasting process.



AeroSpreader™ S125 trailer model with Manual Periscope Feed Head™, Feed Extension Tube, and Extended Cable Controls



AeroSpreader™ S125 base model

AeroSpreader™ S125 Specifications

Capacity	125 kg / 276 lb
Feed Sizes	2 – 11 mm
Broadcast Rate	37.5 kg / 82.6 lb maximum per minute for 9 mm feed pellets. Note that feed delivery rates increase as feed pellet sizes decrease.
Broadcast Range	21.5 m / 70.5 ft with 9 mm pellets
Dimensions (L x W x H)	Stationary model: 127 x 61 x 99 cm / 50 x 24 x 39 in Mobile model: 127 x 81 x 104 cm / 50 x 32 x 41 in
Tare Weight (empty)	Stationary model: 64 kg / 141 lb Mobile model: 77 kg / 170 lb

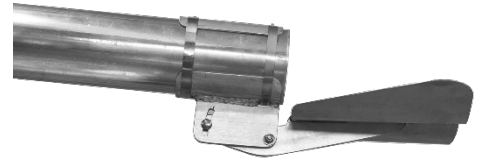
AeroSpreader™ S125 stationary model with Automatic Periscope Feed Head™ & Feed Extension Tube



AeroSpreader™ S125 mobile model

Feed hopper size can be customized.
Specifications and design subject to change without notice.
Designed and manufactured in Canada.

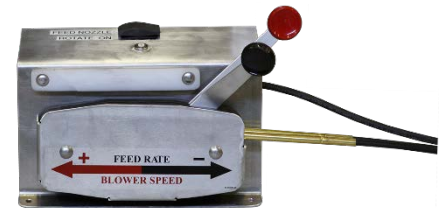
Feeder Options



Gull Wing air deflector for optimum feed spread



Manual Periscope Feed Head™ with Feed Extension Tube to maximize feed broadcast distance and control



Extended Cable Controls for truck/ATV/boat mounted feeder

See Options Sheet for a full listing of accessories and feeder options.